

31st Street Lot Improvements

Purpose of the Presentation

Discuss completed work

Share County's plans

Get community input on perimeter landscaping

Current Lot and Completed Work:



- Re-graveled lot for ART drivers' parking
- Installed dark-sky LED pole lights

- Planted trees on northwestern corner of the lot
- Treated Invasive Plants

Invasive Plants Treatment

Cut and treated large bushes, climbing vines and bamboos

Before



Now



Area is being treated every Spring and Fall until Spring 2022

Long-term Lot Use

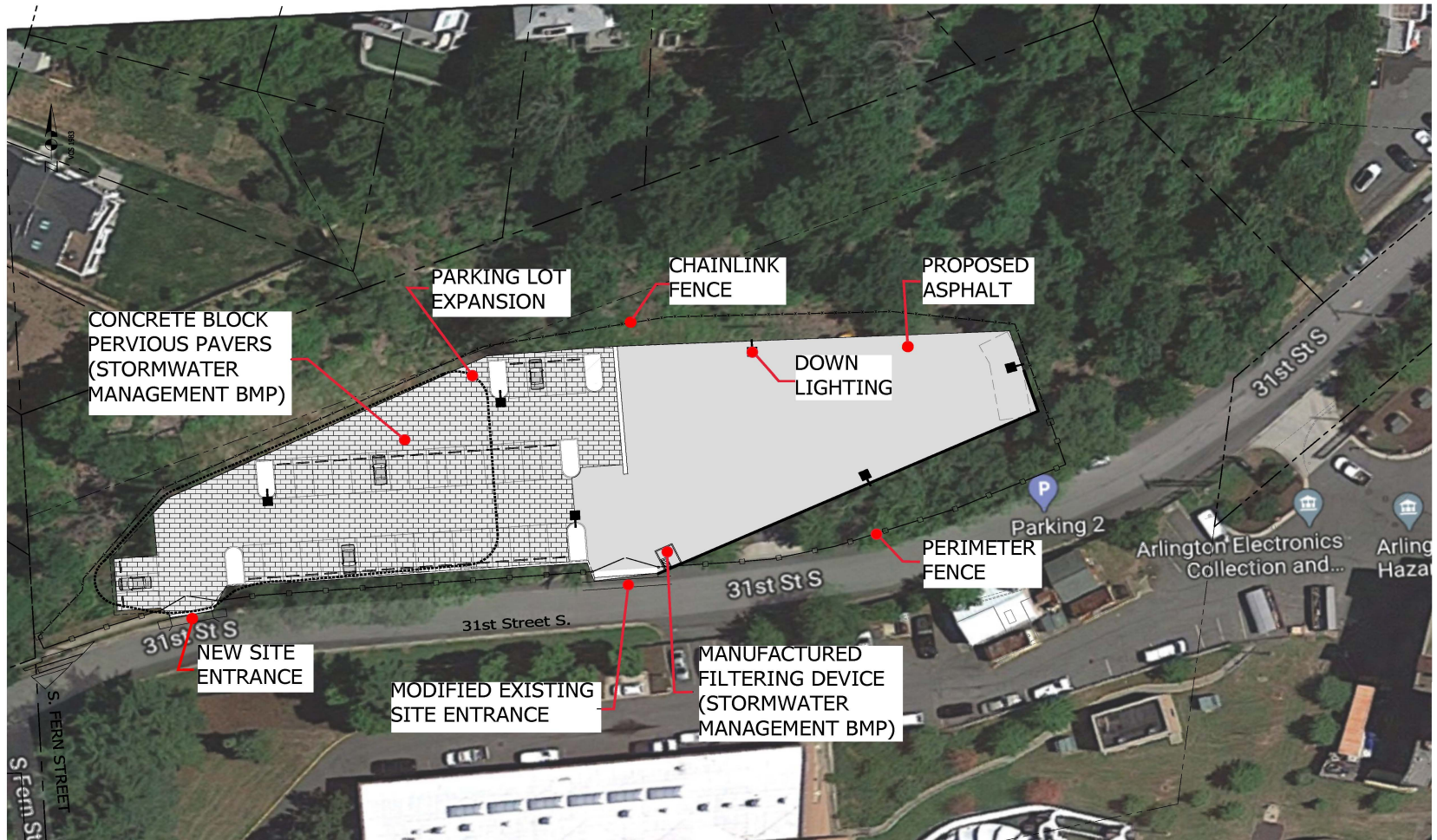
Uses Allowed
in P-S Zone

Contractor
laydown

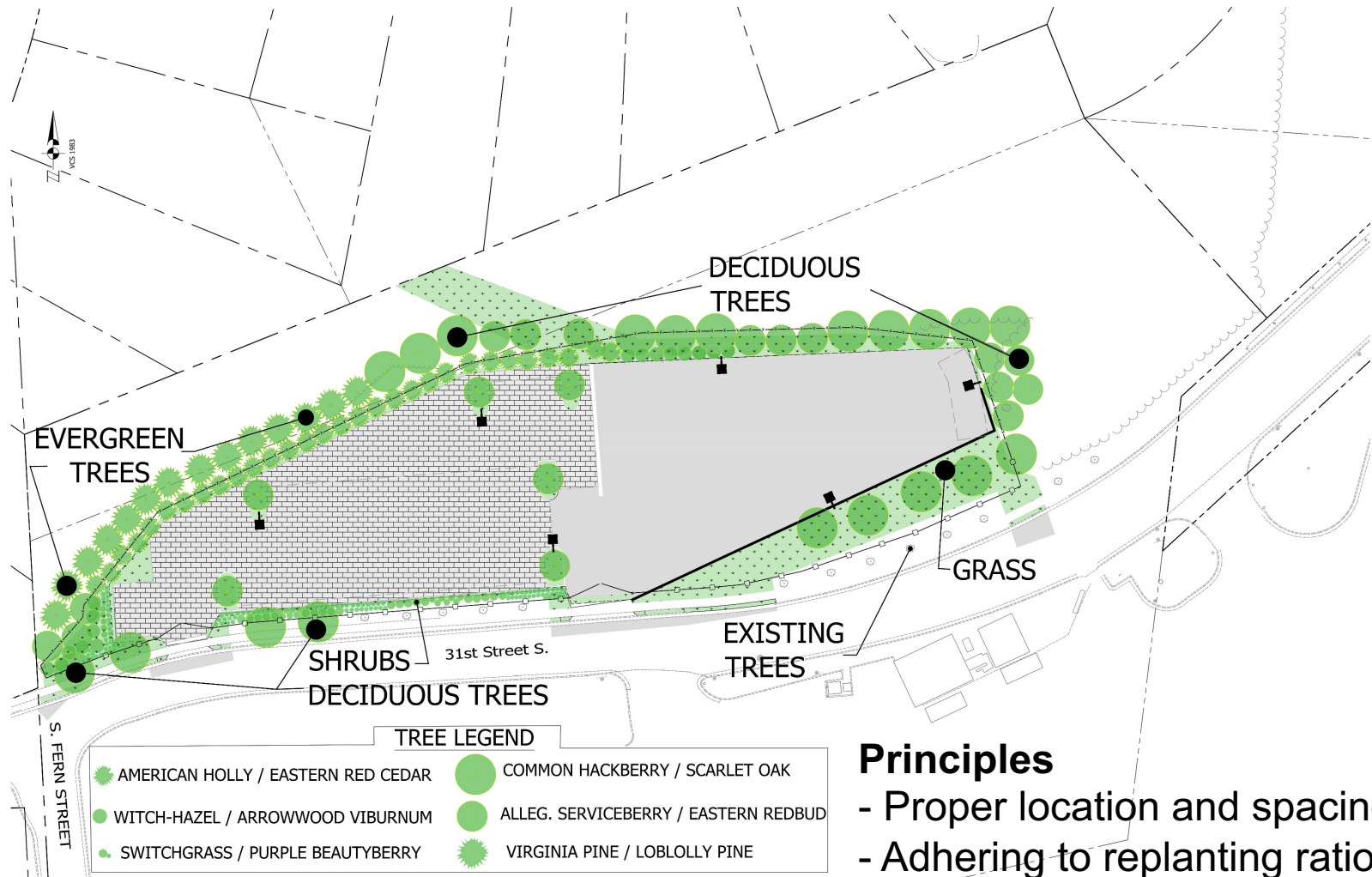
Flexible material
and equipment
storage

Parking for
County services
employees

Site Design Concept Plan



Site Landscaping Concept Plan



Principles

- Proper location and spacing
- Adhering to replanting ratios
- Replanting native species

Landscaping Proposed Native Tree Species



Juniperus Virginia



Allegheny Service Berry



American Holly



Loblolly Pine



Common Hackberry



Virginia Pine



Eastern Redbud



Scarlet Oak

Fencing Options



Timeline

