

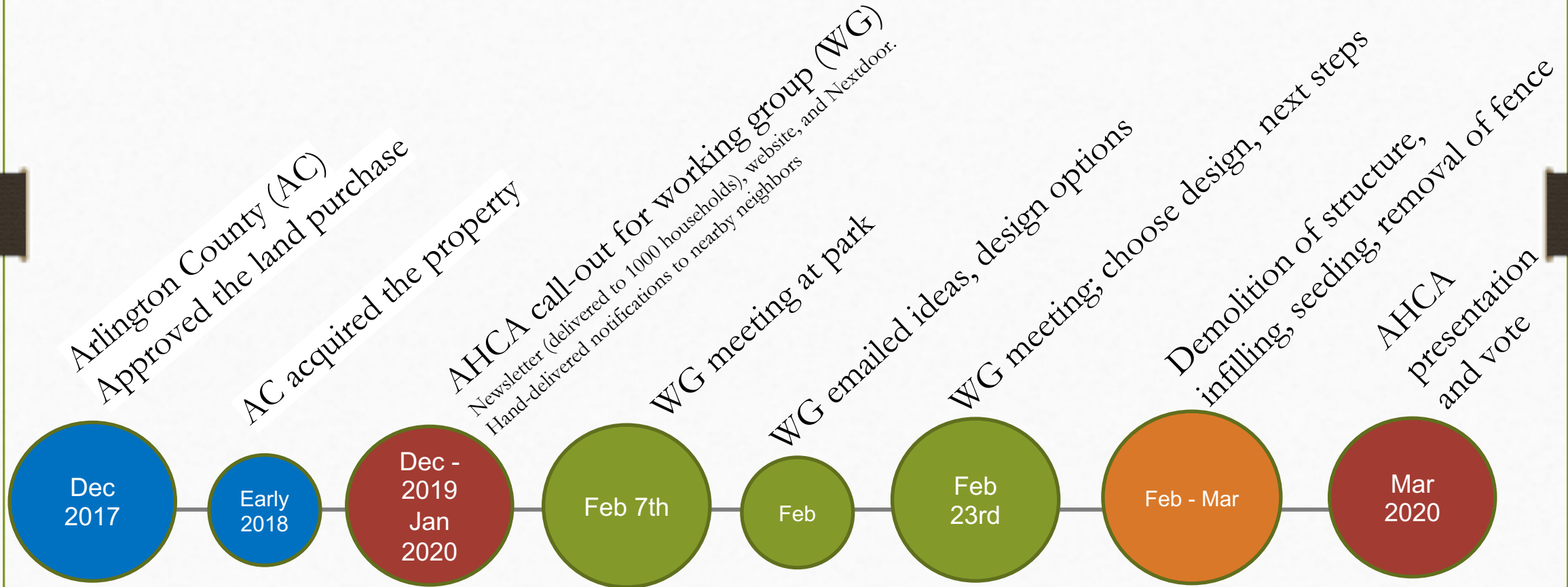
Ives Park

Fostering community and nature

Context and History

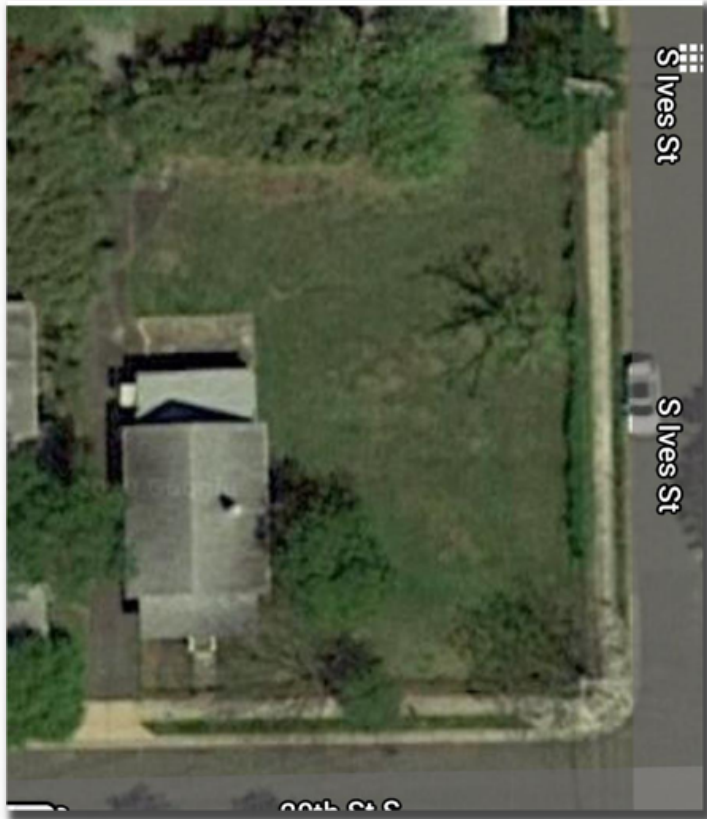
- Dec 2017, 1/4 acre land purchase approved. Acquired in early 2018
- Casual use space
 - “Such as having a picnic, throwing a Frisbee, laying out on a blanket, reading or having small social gatherings,” County staff report 2017.
 - Casual use should be “equipped with features that encourage use (e.g., benches, picnic tables and walking paths)” Arlington 2019 Public Spaces Master Plan, pg 62
- Natural areas and casual use spaces, Arlington resident’s top priorities (2019 PSMP survey)
- No county funding. Beautification and activation by neighborhood volunteers
 - “We are more than happy to work with the community on potential pop-up neighborhood-funded activities...” Dept. of Park staff, 20 Nov 2019

Timeline So Far



Ives Park site: Pre-Demolition

Located at the NW corner of 20th and Ives Street South



Ives Park site: Post-Demolition March 2020

House, driveway, and most of fence removed



Beautification in 3 Potential Phases

Phase 2

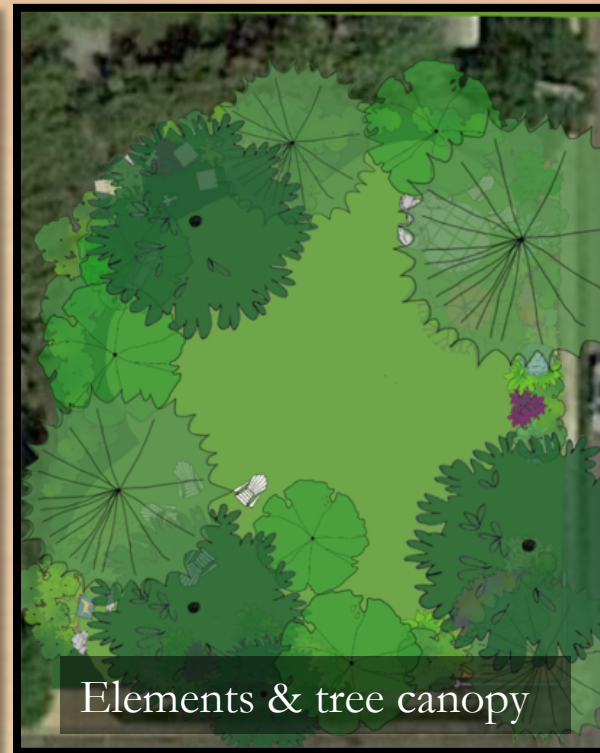
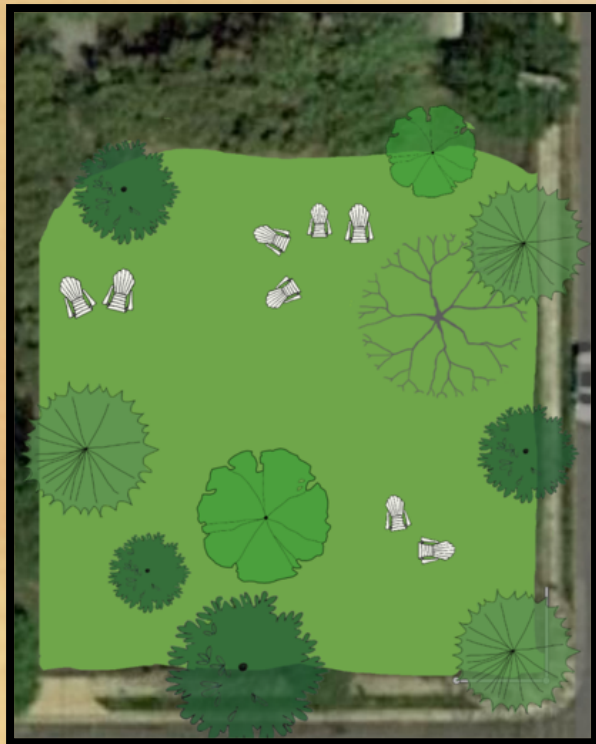
Over the next year

Phase 3

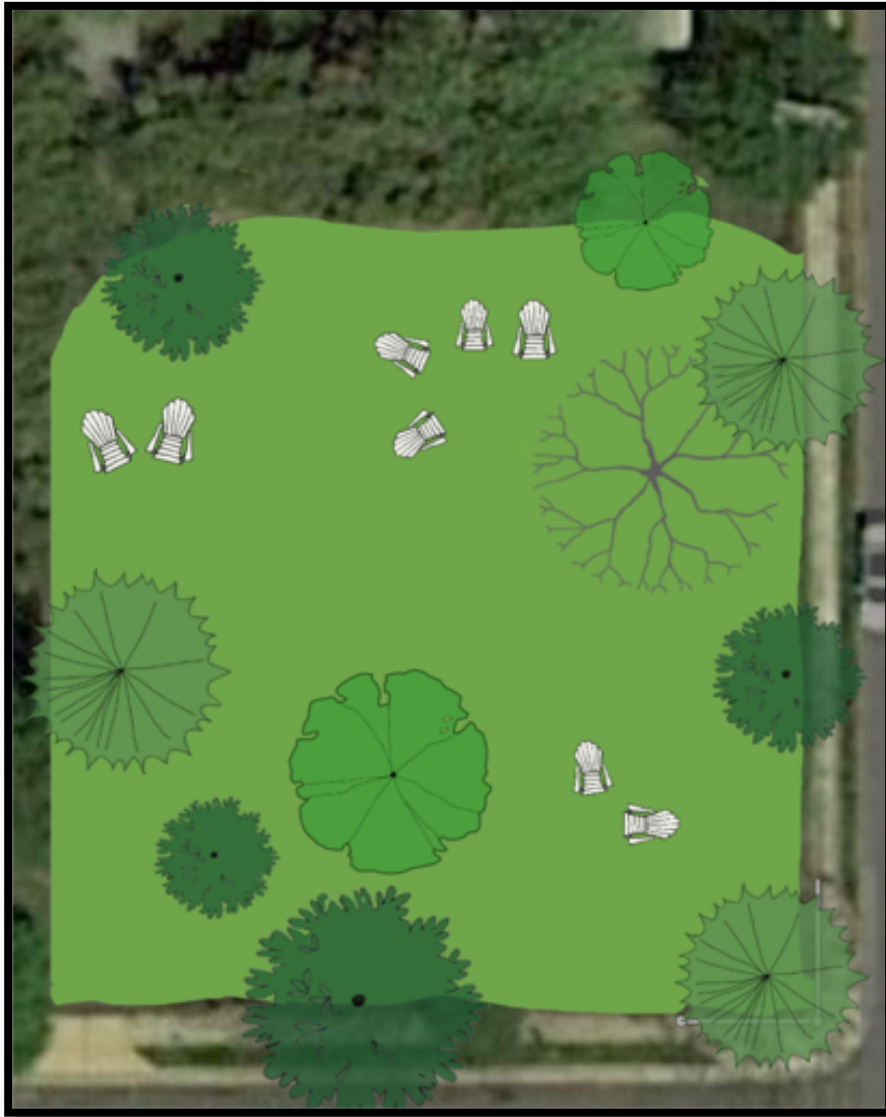
Future possibilities

Phase 1

Spring 2020



Phase 1: Spring 2020



New trees added, as available, in line with the final planting design



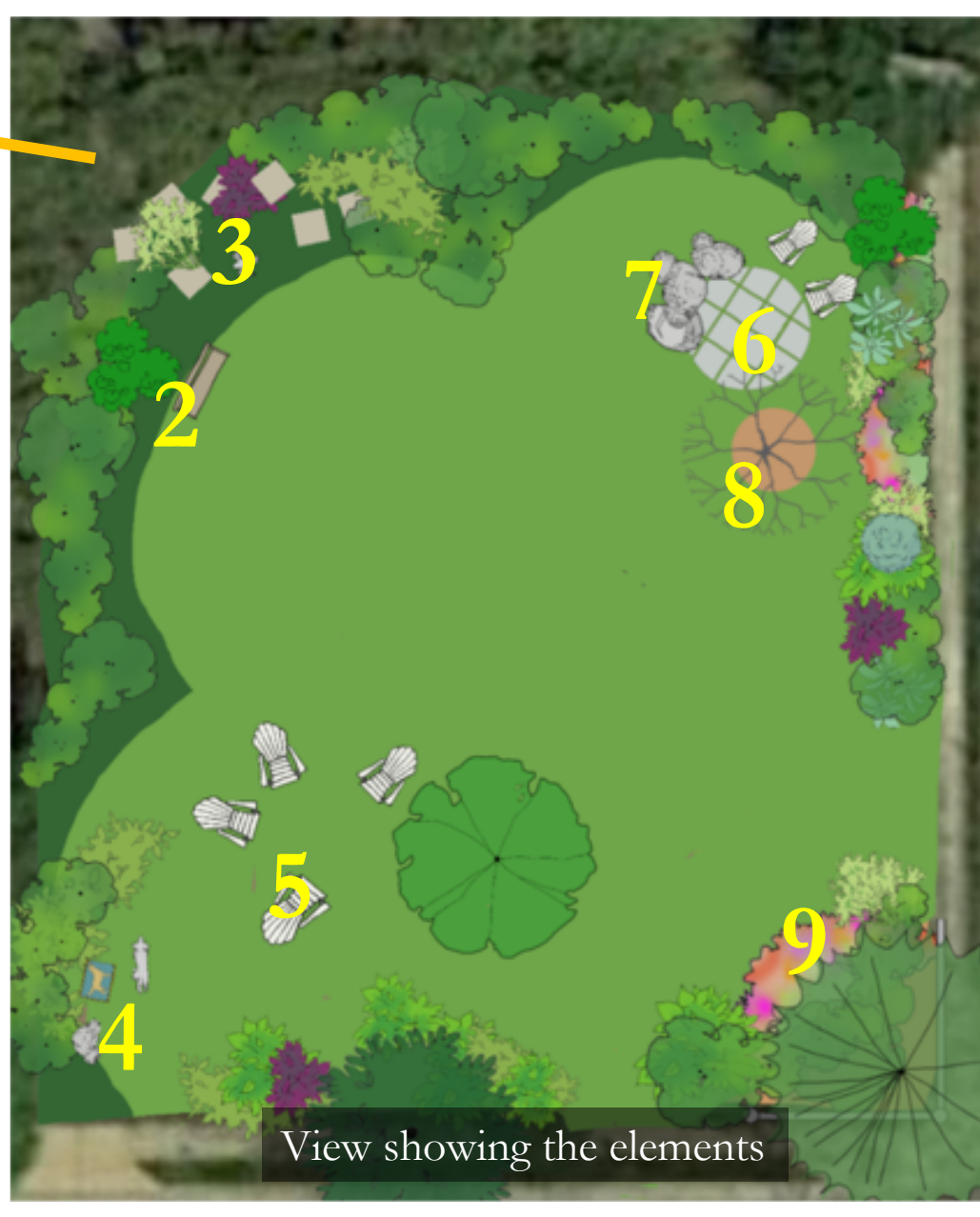
IKEA or other moveable chairs
Adult and kid sizes



Phase 2: Creating natural rooms



Elements & tree canopy

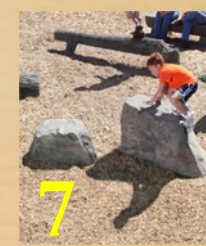


View showing the elements

Mosaic patio



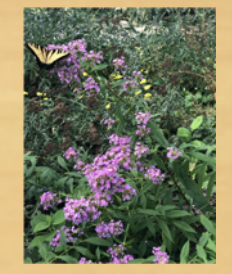
Boulders



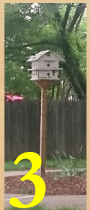
Table



Pollinator/native/wildlife-friendly plants, educational signs



Large trees Stone bench Birdhouse grove



Dog bag station



Moveable chairs



Phase 2: Elements in harmony with nature and community

Large trees



Loss of many mature trees in our community. Strong desire to add large trees to our parks.

Moveable chairs



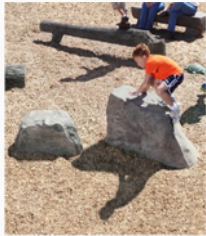
Great for small and large gatherings. Used in many parks across the country and world. The County allowed Virginia Highlands Park to have plastic Adirondack chairs.

Mosaic patio and stepping stones



Engages children and adults. Builds community ownership in the park. Unique and colorful feature.

Boulders



A natural element for kids to enjoy

Dog bag station



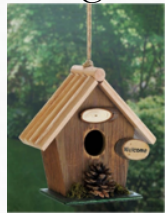
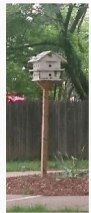
Helps to keep the park and the community, clean.

Table



Flexible table. Useable alone or with moveable chairs.

Birdhouse grove



Adds utility and beautification. Alexandria, VA park has a small pocket park with dozens of birdhouses.

Pollinator gardens with educational signs



Beautification Promotes natural habitats. Buffer to the street. Alexandria park has educational signs

Stone bench



Durable and beautiful seating. Repurposing materials; a donation from a neighbor.

Bamboo!

A lot of discussion, but no solution just yet!

Some ideas

- Trim it back 1/3 to create more open space.
- Create a path through it, a bamboo maze
- Make a lower hedge
- Maintain it from spreading
- Eliminate it and replace it with evergreen screen trees.



We have a designated working group member to explore options and report back to the civic association.

Volunteer groups moving forward

organize events, fundraise, install and maintain elements

Plant and tree selection group

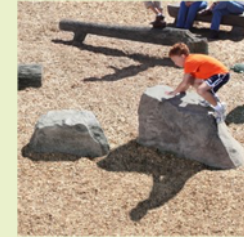


Birdhouse group



Working group or individuals

Boulders



Table



Mosaic patio group



Bamboo group



Gardening group



Moveable chairs



Stone bench



Dog bag station



Phase 3: Future possibilities

Water basin with solar fountain



Gravel or mulch seating area



Gravel or mulch path



Next Steps

Iterative process. Updating the community along the way.

Step #1 AHCA membership approval

Step #2 AHCA presents plan to county

Make adjustments to plan if necessary

Step #3 Volunteer groups work on their elements

Plants, trees, mosaic patio, etc...

Step #4 Park opening celebration!

Questions?

Support this plan?

CASUAL USE SPACES

While other localities, including the City of Alexandria, Bellevue and Washington, are also finding a need to address the spaces that are intentionally designed to support casual, impromptu use and connection with nature, there is no clear or consistent terminology or definition in use. In this plan, these spaces are referred to as "casual use spaces." The objective is to ensure that casual use spaces are considered to be an intentional, integral part of Arlington's public space system. Casual use spaces should not be leftover after other uses are accommodated; these spaces should be purposefully designed and designated as part of the public space system.

Some casual use spaces, such as forested or landscaped areas, are available at all times, while others, such as fields with community use or school grounds, are available for casual use when they are not being used for other purposes.

What Types of Spaces Support Casual Use?

CASUAL USE SPACES INCLUDE

(Some available always, some at times)

- accessible forested areas
- accessible landscaped areas
- esplanades
- fields with community use
- grill/picnic areas (including shelters)
- open lawn with/without seating
- plazas
- school grounds

CASUAL USE SPACES DO NOT INCLUDE

- batting cages, dugouts
- community gardens
- disc golf
- indoor or outdoor pools
- multi-use, paved courts
- outdoor tracks
- parking lots
- permit only fields
- playgrounds
- skateparks
- spraygrounds

INTEGRAL PART OF THE SYSTEM

casual use spaces should be intentional parts of the system, not just spaces that are "left over"

CASUAL USE EXAMPLES

- Bird watching
- Relaxing on a lawn
- People watching
- Picnicking
- Playing catch or throwing a frisbee
- Reading a book
- Sitting on a bench
- Social interaction
- Strolling through a wooded area



How the PSMP Supports Enhancing and Creating Casual Use Spaces

Inventory	Casual use space is a new concept, and as such, has not been inventoried. The County should undertake an inventory as part of the implementation of the plan (3.3.1).
Standards	Currently, there is no available benchmarking or other data for this type of public space, so future analysis should be explored to develop standards (3.3.2).
Park Master Plans	New park master plans developed by the County should include intentionally designed casual use spaces (3.3.3).

Casual Use Space Design Characteristics

Casual use spaces should be designed to include many of the following characteristics:

Open	<ul style="list-style-type: none"> • Unobstructed or minimally obstructed (e.g., minimal fencing) • Usable and occupiable • Available to the public, at least at specified times • Visible from surrounding areas
Natural	<ul style="list-style-type: none"> • Tied to substantial natural features, trees, vegetation, landscaping and/or grass • Incorporate biophilic design principles • Integrate natural spaces, playsets and other landscape designs
Flexible	<ul style="list-style-type: none"> • Designed to promote multiple types of casual use to attract diverse populations and support inclusivity in the County • Equipped with features that encourage use (e.g., benches, picnic tables and walking paths)
Visible	<ul style="list-style-type: none"> • Intentionally designed, rather than leftover spaces • Marked by visible signage that welcomes the entire Arlington community • Located to avoid dead-ends and areas that are not highly visible